



THE GARAGE

Construction Update

Issue 65 – 09 April 2021



General progress

General activity continues to focus on furniture installation, 2nd fix electrical works, taping & jointing and decorations. This will be the case for the next few weeks.



Work concluded this week

Parfitt: Decorations to common parts complete, minor snagging ongoing.

Preedy: Electrical testing on ground and 1st floor complete, pre-decoration snagging complete, taping and jointing to stair core complete, balustrade installation complete.

Townsend: Mist coat applied to 2nd and 3rd floors, floor laying continued, basement closing up walls and ceiling continued.

Beddoe: Loading out of kitchen and furniture for installation next week.

MacDonald: Furniture installation is 85% complete, 2nd fix carpentry (architraves & skirtings) commenced.



Work planned for coming week

Parfitt: Flooring to staircase, snagging, builder's cleaning.

Preedy: Electric testing to complete on top floor, balustrade install starts, final decoration commences.

Townsend: Mist coat to Ground & 1st, floor laying continues, continue closing up basement.

Beddoe: Start install of cluster kitchens & furniture, 2nd fix carpentry to follow.

MacDonald: 2nd fix carpentry continues, electric 2nd fix continues

Site Wide: Below ground ducts for BT Open Reach and minor drainage alterations



Any noisy work planned this week?

No noisy work is planned for the coming week.



Parking

Nothing to report.

SITE CONTACT:

Keith Holt (temp. site manager)
Graham Fisher (project manager)
Mark Yonwin (Danehurst)
Emergency out of hours contact:

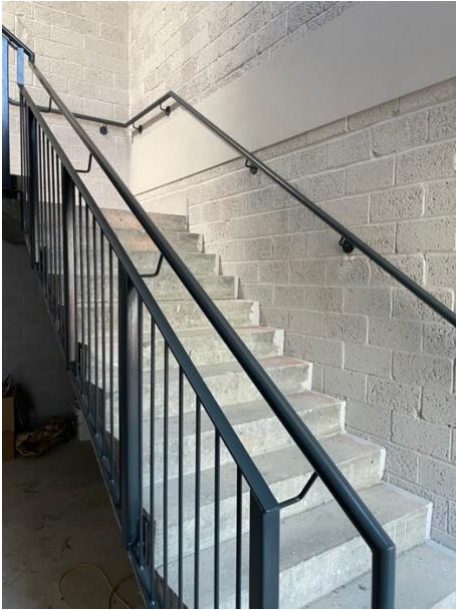
07514 496 703
07972 136 505
07788 561 159
0870 720 0785

keith.holt@hgconstruction.co.uk
graham.fisher@hgconstruction.co.uk
mark@danehurst.com

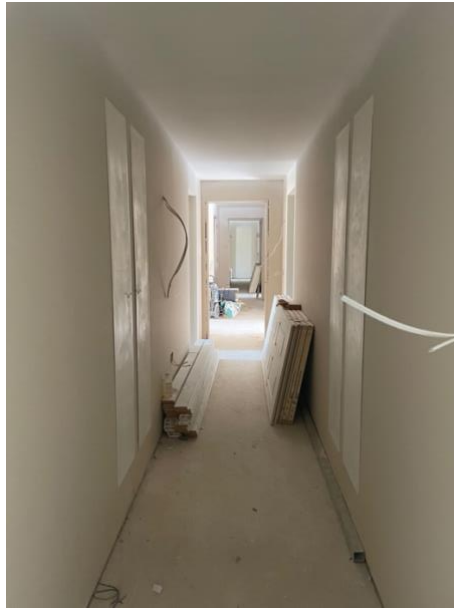
4 Hunting Gate Hitchin Hertfordshire SG4 0TJ

HG Construction Ltd
01462 454 444
www.hgconstruction.co.uk

PROGRESS PHOTOS w/e 16.04.2021



Stairs in Parfitt w. balustrade finished.



Mist coat applied to 2nd floor corridor in Townsend. Cluster bedroom in Townsend with mist coat – 1st floor



Wood prepared from trees on site for use in reception Corridor lighting installed in Parfitt



Cluster bedroom with furniture installed - MacDonald

SITE CONTACT:

Keith Holt (temp. site manager)
Graham Fisher (project manager)
Mark Yonwin (Danehurst)
Emergency out of hours contact:

07514 496 703
07972 136 505
07788 561 159
0870 720 0785

keith.holt@haconstruction.co.uk
graham.fisher@haconstruction.co.uk
mark@danehurst.com

HG Construction Ltd
4 Hunting Gate Hitchin Hertfordshire SG4 0TJ
01462 454 444
www.hgconstruction.co.uk



Cluster kitchen in Preedy – final electrical works

Cluster Kitchen in Beddoe awaiting kitchen installation.



View of site courtyard as at Friday 16 April

SITE CONTACT:

Keith Holt (temp. site manager)
Graham Fisher (project manager)
Mark Yonwin (Danehurst)
Emergency out of hours contact:

07514 496 703
07972 136 505
07788 561 159
0870 720 0785

keith.holt@hgaconstruction.co.uk
graham.fisher@hgaconstruction.co.uk
mark@danehurst.com

4 Hunting Gate Hitchin Hertfordshire SG4 0TJ

HG Construction Ltd

01462 454 444
www.hgconstruction.co.uk