

THE GARAGE

Construction Update

Issue 63 – 26 March 2021



General progress

The crane has gone and the concrete silo feeding the brick and blockworks have left the site. External works underway around Parfitt for its opening next week as marketing suite. Internally, works continue apace.



Work concluded this week

Parfitt: Stair balustrade installed, electric 2nd fix underway, fire alarm panels installed, doors and walls painting in progress.

Preedy: Plasterboard to walls and ceilings in stair cores almost complete, all furniture installed.

Townsend: Taping and jointing completed to 1st/ 2nd/ 3rd floor, ground floor closing up walls and ceilings complete, lift installation complete, 1st fix M&E completed

Beddoe: Floor installation completed to 1st floor level, DPM and latex complete on 3rd floor, electrics to staircore completed

MacDonald: Floor installation complete and first coat decoration.



Work planned for coming week

Parfitt: Final decoration of studios, testing electrics, build external wall, 2nd fix electric continues.

Preedy: Commence 2nd fix carpentry to rooms, continue 2nd fix electrics.

Townsend: Taping and jointing to ground floor, complete taping & jointing 2 & 3 level, mist coat to 2 & 3 floor, commence preparation for floor laying

Beddoe: Complete flooring installation to 2nd and 3rd floor

MacDonald: Commence furniture installation to studios and cluster apartments.



Any noisy work planned this week?

No noisy work is planned for the coming week.



Parking

Nothing to report.

SITE CONTACT:

Keith Holt (temp. site manager)
Graham Fisher (project manager)
Mark Yonwin (Danehurst)
Emergency out of hours contact:

07514 496 703
07972 136 505
07788 561 159
0870 720 0785

keith.holt@hgconstruction.co.uk
graham.fisher@hgconstruction.co.uk
mark@danehurst.com

HG Construction Ltd
4 Hunting Gate Hitchin Hertfordshire SG4 0TJ

01462 454 444
www.hgconstruction.co.uk

PROGRESS PHOTOS w/e 26.03.2021



External works to Parfitt underway on Harvest Road



Site view with no crane!



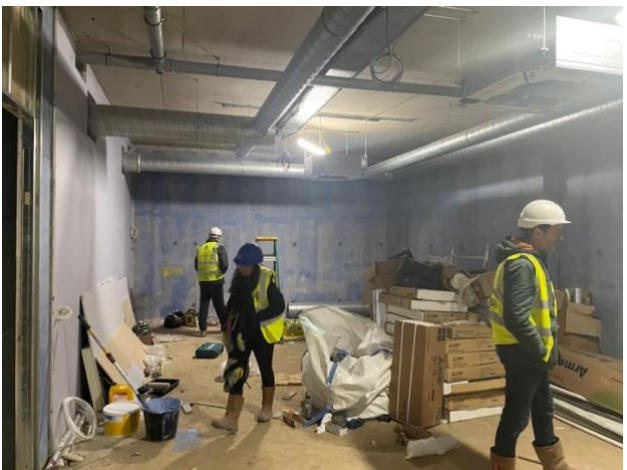
Final electric works to Parfitt underway



Furniture installation underway in Parfitt



Kitchen splashback to studio kitchen in Parfitt



This will be the Gym – eventually!

SITE CONTACT:

Keith Holt (temp. site manager)
Graham Fisher (project manager)
Mark Yonwin (Danehurst)
Emergency out of hours contact:

07514 496 703
07972 136 505
07788 561 159
0870 720 0785

keith.holt@haconstruction.co.uk
graham.fisher@haconstruction.co.uk
mark@danehurst.com

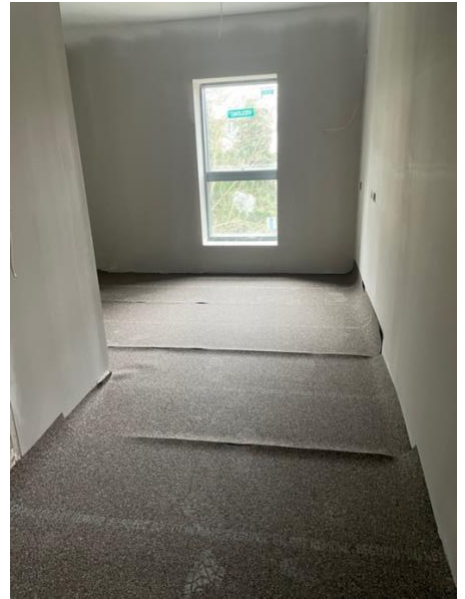
HG Construction Ltd
4 Hunting Gate Hitchin Hertfordshire SG4 0TJ
01462 454 444
www.hgconstruction.co.uk



Entrance doors installed with 1st blue coat.



Typical cluster bedroom with furniture.



Flooring membrane 3rd floor Beddoe installed



Basement communal room – getting ready for plasterboard ceilings coming week

SITE CONTACT:

Keith Holt (temp. site manager)
Graham Fisher (project manager)
Mark Yonwin (Danehurst)
Emergency out of hours contact:

07514 496 703
07972 136 505
07788 561 159
0870 720 0785

keith.holt@haconstruction.co.uk
graham.fisher@haconstruction.co.uk
mark@danehurst.com

4 Hunting Gate Hitchin Hertfordshire SG4 0TJ

HG Construction Ltd
01462 454 444
www.hgconstruction.co.uk