

THE GARAGE

Construction Update

Issue 51 – 18 December 2020



General progress

External building works nearing completion and the majority of work is taking place inside with mechanical and electrical 1st fix and dry lining having achieved good momentum.



Work concluded this week

Parfitt: Walls and ceilings have almost been closed up;

Preedy: Dry lining to close up walls and ceilings almost complete at ground floor.

Townsend: Mechanical work continues in basement, roof almost complete, slating complete.

Beddoe: Screeding to top floor almost completed, stud work in progress, lower roofs to each end felt and battened.

MacDonald: Copings installed to high roofs, metal stud works continued on upper floors, screeding of ground floor completed.



Work planned for coming week

Parfitt: Complete closing up walls and ceilings on first floor.

Preedy: Close up partitions and ceilings on first floor, prepare to close up walls and ceilings 2nd floor.

Townsend: Complete flat roof installation, felt and batten low level pitched roofs, plant room installation will continue

Beddoe: Metal studwork continues, mechanical and electric 1st fix to 2nd & 3rd floor continues

MacDonald: Partitions installation on ground floor reception and foyer. 1st fix Mechanical and electrical works continues.



Any noisy work planned this week?

The site will close for Christmas on Tuesday 21st December and open 4th January 2021.



Parking

One vehicle was reported and found to belong to a plumber working on the site. The fine has been levied with the sub-contractor.

SITE CONTACT:

Keith Holt (temp. site manager)
Graham Fisher (project manager)
Mark Yonwin (Danehurst)
Emergency out of hours contact:

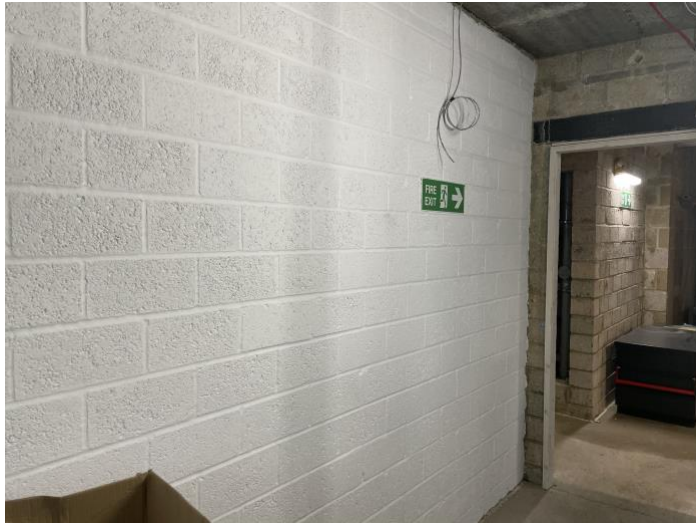
07514 496 703
07972 136 505
07788 561 159
0870 720 0785

keith.holt@hgconstruction.co.uk
graham.fisher@hgconstruction.co.uk
mark@danehurst.com

HG Construction Ltd
4 Hunting Gate Hitchin Hertfordshire SG4 0TJ

01462 454 444
www.hgconstruction.co.uk

PROGRESS PHOTOS



Sample wall finish to stair core in Preedy – only light fittings to add!



Dry lining in progress to cluster kitchen ground floor Preedy



Townsend wet due to slow progress with flat roof installation

SITE CONTACT:

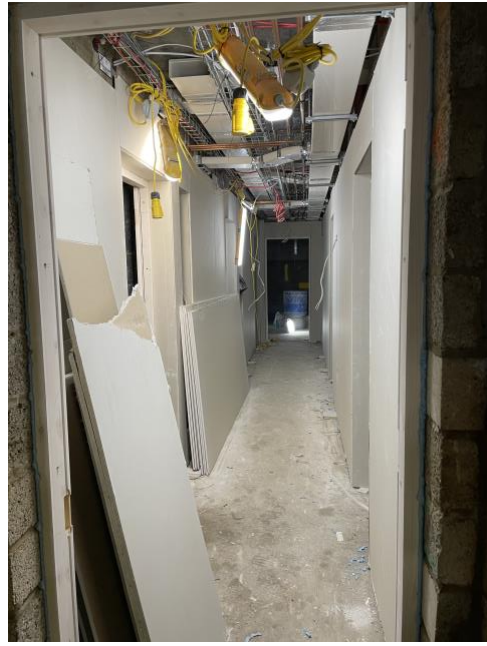
Keith Holt (temp. site manager)
Graham Fisher (project manager)
Mark Yonwin (Danehurst)
Emergency out of hours contact:

07514 496 703 keith.holt@hgconstruction.co.uk
07972 136 505 graham.fisher@hgconstruction.co.uk
07788 561 159 mark@danehurst.com
0870 720 0785

HG Construction Ltd
4 Hunting Gate Hitchin Hertfordshire SG4 0TJ
01462 454 444
www.hgconstruction.co.uk



Mechanical ventilation installed to top floor studio



Dry lining to Preedy ground floor corridor



Plant room resembling a ship's machine room!

SITE CONTACT:

Keith Holt (temp. site manager)
Graham Fisher (project manager)
Mark Yonwin (Danehurst)
Emergency out of hours contact:

07514 496 703
07972 136 505
07788 561 159
0870 720 0785

keith.holt@haconstruction.co.uk
graham.fisher@haconstruction.co.uk
mark@danehurst.com

4 Hunting Gate Hitchin Hertfordshire SG4 0TJ

HG Construction Ltd
01462 454 444
www.hgconstruction.co.uk